



# Wrap It Up


Finished Quilt size 56" x 62" (130 x 160cm)

Designed by Lynne Goldsworthy of [lilysquilts.blogspot.com](http://lilysquilts.blogspot.com)  
using the Wrap It Up collection from Makower Uk [www.makoweruk.com](http://www.makoweruk.com)



**makower uk**  
*The Henley Studio*

118 Greys Road, Henley-on-Thames, Oxon RG9 1QW.  
Tel: +44(0)1491 579727  
e-mail [info@makoweruk.com](mailto:info@makoweruk.com) [www.makoweruk.com](http://www.makoweruk.com)

 **andover**



# Wrap It Up

Finished Quilt size 56" x 62" (130 x 160cm)

Designed by Lynne Goldsworthy of [lilysquilts.blogspot.com](http://lilysquilts.blogspot.com)

using the Wrap It Up collection from Makower UK [www.makoweruk.com](http://www.makoweruk.com)

## **FABRIC REQUIREMENTS - Quilt**

Fabric	Description	Amount	Use
2000/W01	White Spectrum	2 m / 2 yds	Border background
1605/1	Abstract Squares	3 ¼ m / 3 ½ yds	Backing
1608/G	Ogee green	One F8th	Border trees
1608/P	Ogee pink	One F8th	Border trees
1609/B	Star blue	One F8th	Border trees
1610/G	Pinwheel green	One F8th	Border trees
1610/P	Pinwheel pink	One F8th	Border trees
1610/T	Pinwheel teal	One FQ	Border trees
1611/1	Triangle stripe	One FQ	Border trees
1611/1	Triangle stripe	40cm / ½ yd	Binding
1613/1	Panel	Two panels 120cm / 48"	Central piece
Wadding 1.6m x 1.8m / 64" x 70"			
Twenty template sheets			

### Notes:

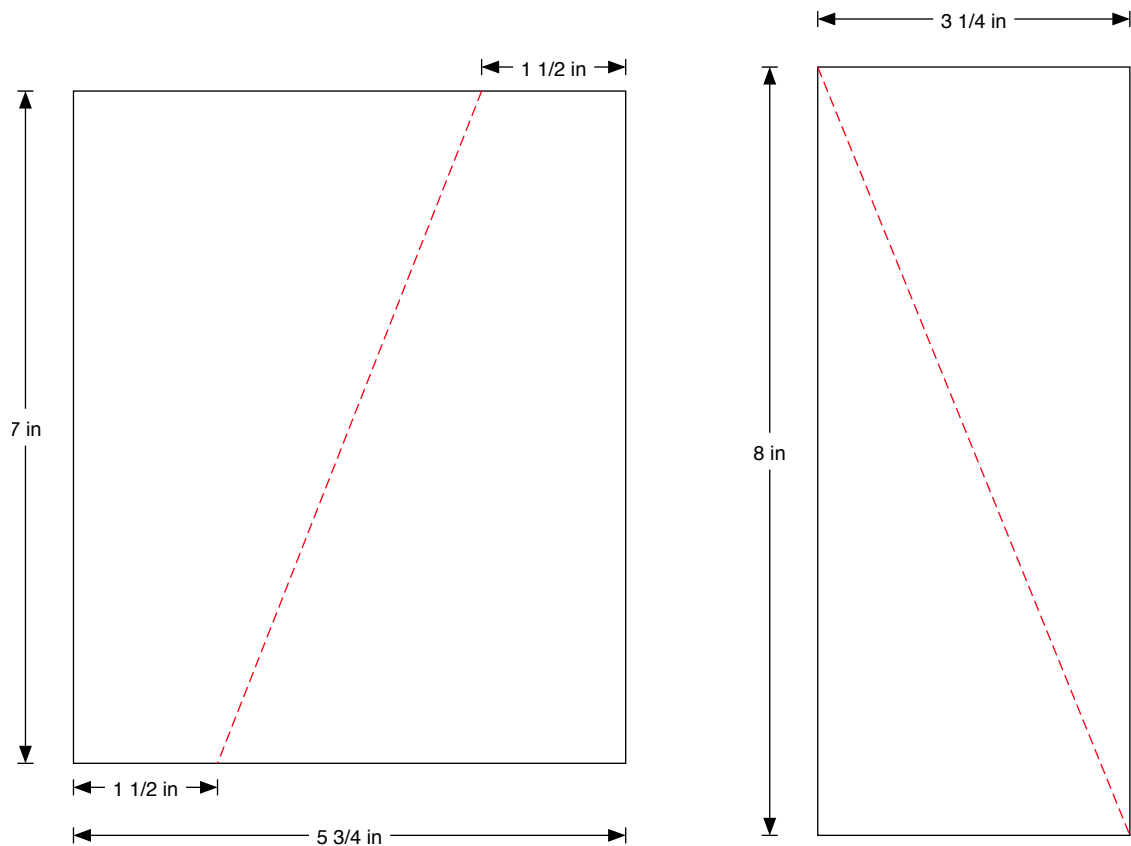
- ¼" seams are used throughout except where stated otherwise.
- Shorten your stitch length for foundation paper piecing.
- WOF = width of fabric – a strip of fabric cut from selvedge to selvedge
- Press seams after each seam is sewn and press towards the darker fabric or open unless otherwise stated
- F8th = a fat eighth – a cut of fabric 9" x 22"
- This pattern uses foundation paper piecing. Shorten your stitch length to approx. 1.5 for foundation paper piecing. If you have not used this technique before, you can find a useful tutorial here: <http://www.lovepatchworkandquilting.com/we-love/foundation-paper-piece>

## **Quilt instructions**

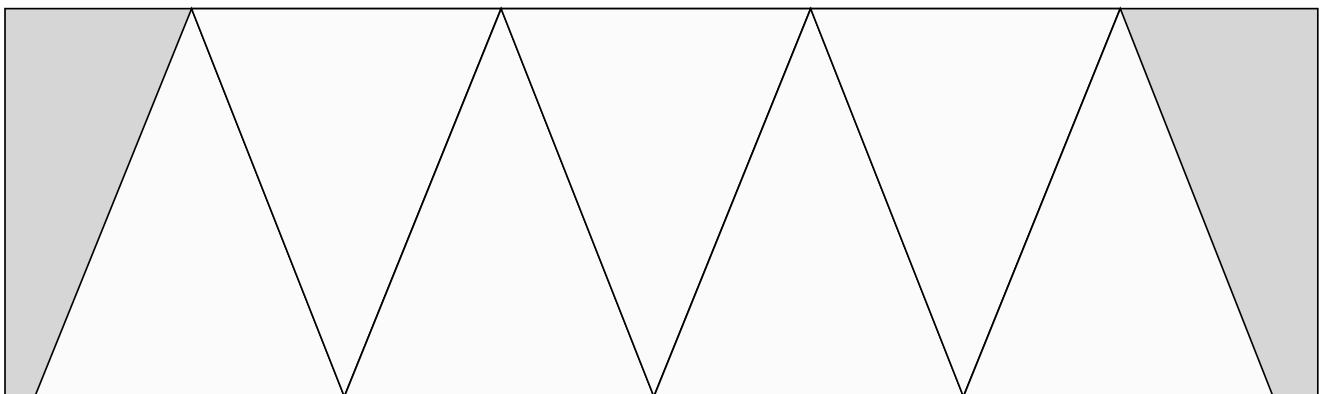
### Cutting the fabrics

1. The trees in the border around the quilt top are foundation paper pieced (FPP). For FPP, I find the whole process is quicker and easier if I pre-cut all the pieces. Since you need a margin for error in FPP, I cut each piece with a ~½" border rather than the usual ¼" seam allowance.
2. Cut the white spectrum into:
  - Six 2" WOF strips cut into seventy-six 3" lengths for FPPing sections 2 and 3 on the templates;
  - Three 7" WOF strips cut into nineteen 5 ¾" x 7" rectangles. Cut those as shown at step 3 below. These are for FPPing section 5 on the templates;
  - Four 3 ¼" WOF strips cut into nineteen 3 ¼" x 8" rectangles. Cut those as shown at step 4 below. These are for FPPing section 6 on the templates;
  - One 6 ½" WOF strip cut into four 6 ½" squares;
  - Ten 1 ½" WOF strips – sewn end to end and cut into two 40 ½", two 49", two 54 ½" and two 63" lengths; and
  - If you have two separate panels, you will need one additional 1 ½" WOF strip cut to 40 ½" long to join the two panels together.

- Cut the  $5\frac{3}{4}$ " x 7" rectangles into two shapes by cutting a line from a point  $1\frac{1}{2}$ " away from the top right corner down to a point  $1\frac{1}{2}$ " away from the bottom left corner (see cutting diagram below).
- Cut the  $3\frac{1}{4}$ " x 8" rectangles in half on the diagonal top left to bottom right (see cutting diagram below).



- Cut the blue stars F8th into four  $2$ " x  $22$ " strips and cut those into ten  $2$ " squares per strip for FPPing section 1 on the templates.
- Cut the remaining six F8ths into one  $6\frac{1}{2}$ " x  $22$ " strip and cut seven triangle template shapes from each by rotating the template along the strip as you cut and as shown in the cutting diagram below. These will be used for FPPing section 4 on the templates.



- Cut the backing fabric into two equal lengths and the binding fabric into six  $2\frac{1}{2}$ " WOF strips.

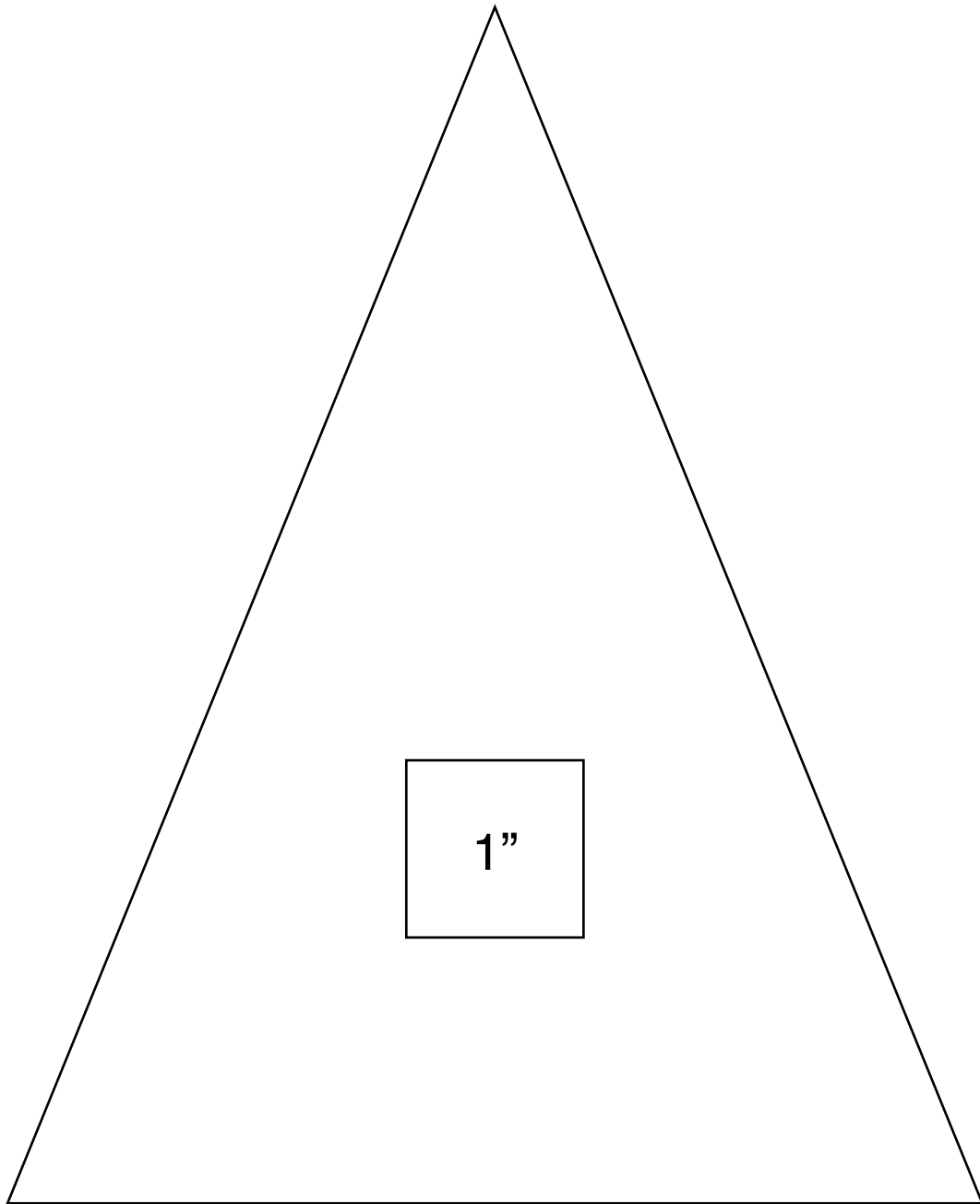
## Making the Quilt Top

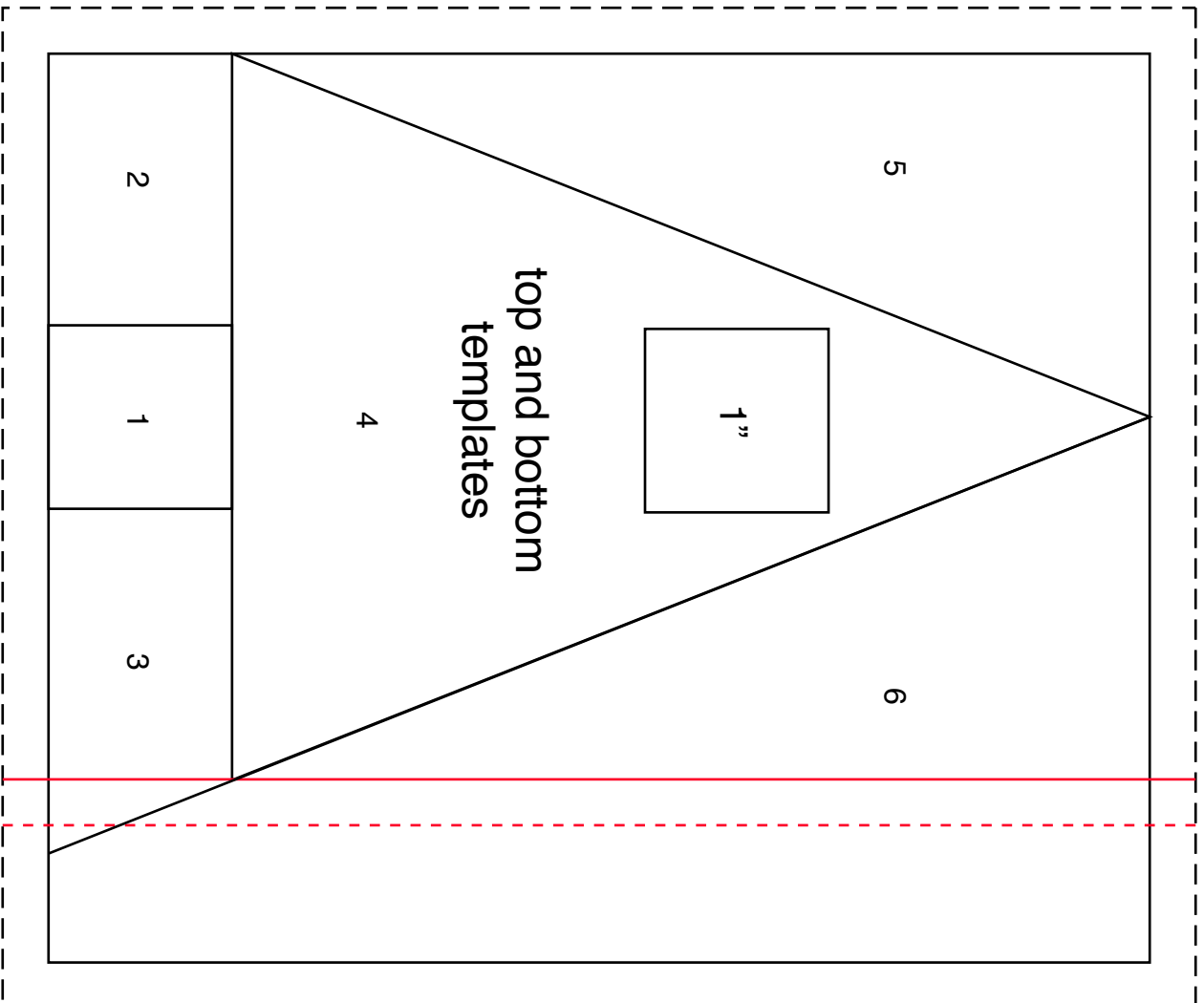
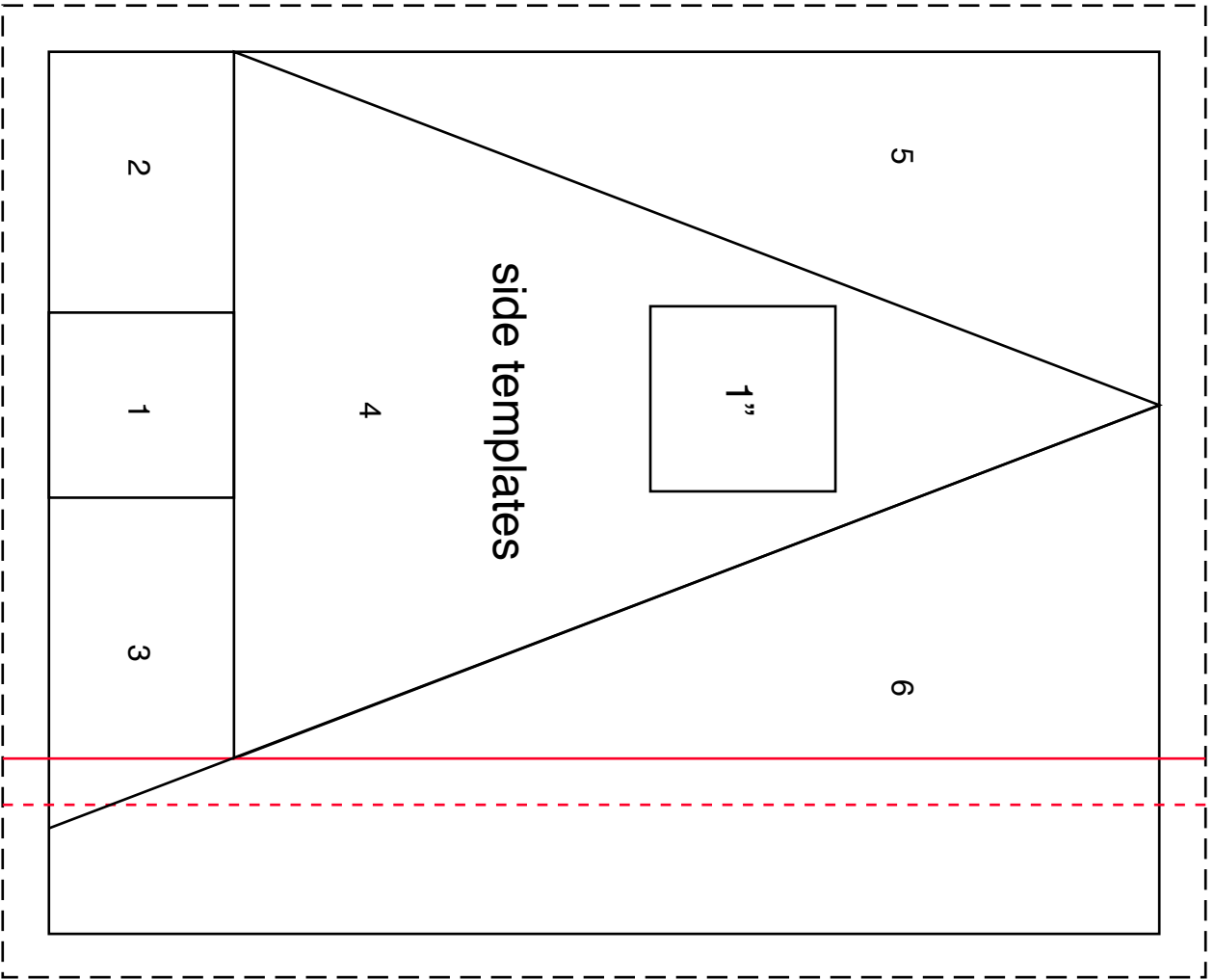
1. Whether you have one double panel or two single panels, trim to give a  $\frac{1}{4}$ " seam allowance all around – i.e. trim  $\frac{1}{4}$ " away from the printed squares and rectangles.
2. If you have two separate panels, sash together along the long edges using a  $1\frac{1}{2}$ " x  $40\frac{1}{2}$ " strip of white spectrum fabric. If you have a double panel, you can ignore this step.
3. Sash the sides of the double panel with two  $1\frac{1}{2}$ " x  $40\frac{1}{2}$ " white spectrum strips then the top and bottom with the  $1\frac{1}{2}$ " x 49" strips.
4. Shorten your stitch length to approx 1.5 and FPP twenty top and bottom templates and eighteen side templates. You can follow the colour placement on the quilt image or choose your own. You will have some spare print fabric triangles as you cut forty-two but only thirty-eight are needed.
5. Trim the templates to the dashed lines. NB: for the left hand tree on each strip, you need to trim to the red dashed line. Tear away the backing papers by folding along the sewn lines and gently tearing. Take care to keep the side trees separate from the top and bottom trees as they are not exactly the same size.
6. Sew the top and bottom trees into two strips of ten and the side trees into two strips of nine.
7. Sew  $6\frac{1}{2}$ " white spectrum squares to each end of the two top and bottom tree strips.
8. Sew the side tree strips to the sides of the quilt top then the top and bottom tree strips to the top and bottom of the quilt top pressing after each seam.
9. Finally sash the sides of the quilt top with the  $1\frac{1}{2}$ " x  $54\frac{1}{2}$ " white spectrum strips then the top and bottom with the  $1\frac{1}{2}$ " x 63" strips.

## Finishing the quilt

1. Sew the two pieces of backing fabric together along the long sides using a  $\frac{1}{2}$ " seam. Press that seam open.
2. Sew the binding strips end to end using diagonal or straight seams as preferred and press wrong sides together along the length to make a double fold binding.
3. Make a quilt sandwich, basting together the quilt back, the wadding and the quilt top.
4. Quilt as desired then trim the quilt square, removing excess wadding and backing. I quilted a grid of vertical and horizontal lines that followed the edge of the printed boxes in the centre of the quilt using a white thread on the front and back.
5. Bind the quilt taking care to mitre the corners.

# Quilt Templates





# Wrap It Up

Table Runner: 45cm x 1.1m / 18" x 44"

Place mats each: 25cm x 30cm / 10" x 12"

Designed by Lynne Goldsworthy of [lilysquilts.blogspot.com](http://lilysquilts.blogspot.com)  
using the Wrap It Up collection from Makower Uk [www.makoweruk.com](http://www.makoweruk.com)



## FABRIC REQUIREMENTS - Table Runner

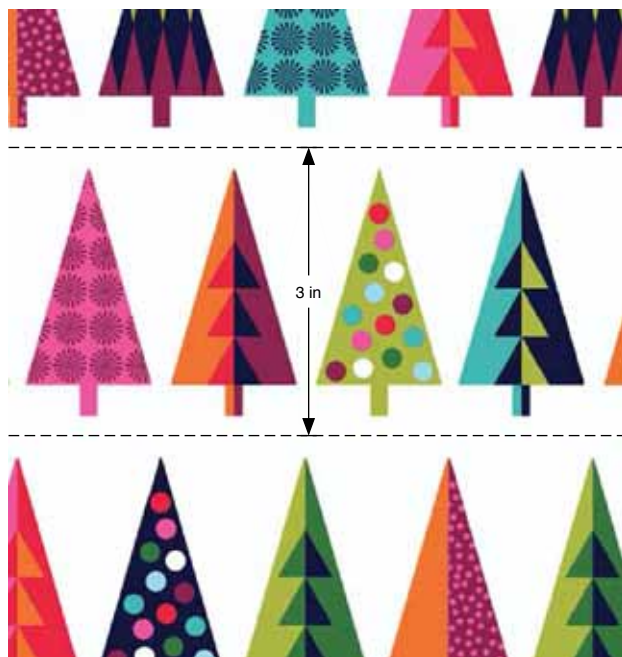
Fabric	Description	Amount	Use
2000/W01	White spectrum	20cm / 7"	Borders
1605/1	Abstract Squares	1 ½ m / 1 ½ yds	Backing
1606/1	Trees	20cms* / 6"*	Fussy Cut for border
1611/1	Triangle stripe	20cm / 7 ½"	Binding
1613/1	Panel	30cms / 12" (half a panel)	Central piece
Wadding - 70cms x 130cms / 26" x 52"			



## FABRIC REQUIREMENTS - Two Placemats

Fabric	Description	Amount	Use
2000/W01	White Spectrum	10cms / 2"	Border
1605/1	Abstract Squares	40cms / 15"	Backing
1606/1	Trees	20cms* / 6"*	Fussy Cut for border
1611/1	Triangle stripe	25cms / 9"	Binding
1609/W	Stars	10cms / 4"	Central piece
Wadding - 40cms x 90cms / 15" x 34"			

\*NB: these strips must be fussy cut so that two complete strips of trees can be cut with a ¼" white strip above and below each row of trees. See diagram below.



Notes:

- ¼" seams are used throughout except where stated otherwise.
- WOF = width of fabric – a strip of fabric cut from selvedge to selvedge
- Press seams after each seam is sewn and press towards the darker fabric or open unless otherwise stated

### **Table Runner instructions**

Cutting the fabrics

1. Trim the half panel to give a ¼" seam allowance all around – i.e. trim ¼" away from the printed squares and rectangles.
2. Cut two WOF strips of trees – each strip will be 3" wide and the cutting lines will sit in the white space between the trees as shown in the diagram below the fabric requirements for the table runner. Count 27 trees on each strip then trim each strip to ¼" beyond the tree on each end of the strip.
3. Cut the white spectrum into five 1" WOF strips and one 1 ½" WOF strip. Cut one of the 1" WOF strips into four 3" lengths and the remaining four to 40" long each. Cut the 1 ½" WOF strip into two 18 ½" lengths.
4. Cut the backing fabric into two equal lengths and the binding fabric into three 2 ½" WOF strips.

Making the Table Runner

1. Sew the 1" x 3" white spectrum strips to each end of the tree strips then trim those strips to 40" long.
2. Sew the 1" x 40" white spectrum strips to the top and bottom of each of the tree strips.
3. Sew those strips to either side of the panel.
4. Sew the 1 ½" x 18 ½" white spectrum strips to either end of the table runner top.



5. Finish as for the wall hanging although the pieces of backing fabric will be sewn together along the short sides. The table runner was quilted with vertical lines approximately  $\frac{1}{2}$ " apart using a white thread on the front and back.

#### Place Mat instructions

##### Cutting the fabrics

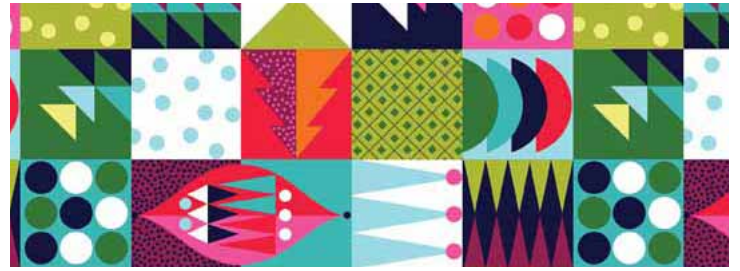
1. Cut the white spectrum fabric into two 1" WOF strips and cut each of those into two  $12\frac{1}{2}$ " lengths.
2. Cut one 15" x 17" rectangle of backing fabric and one of wadding for each place mat.
3. Cut two WOF strips of trees – each strip will be 3" wide and the cutting lines will sit in the white space between the trees as shown in the diagram below the fabric requirements for the table runner. Count eight trees on each strip then trim each strip to  $\frac{1}{4}$ " beyond the tree on each end of the strip.
4. Cut the triangle stripe fabric into three  $2\frac{1}{2}$ " WOF strips and one  $\frac{3}{4}$ " WOF strip. Cut three  $\frac{3}{4}$ " x  $12\frac{1}{2}$ " lengths from the  $\frac{3}{4}$ " WOF strip and one further  $\frac{3}{4}$ " s  $12\frac{1}{2}$ " length from one of the  $2\frac{1}{2}$ " WOF strips.
5. Cut the white star fabric into two  $3\frac{1}{2}$ " x  $12\frac{1}{2}$ " rectangles.

##### Making the Place Mats

1. Sew the  $\frac{3}{4}$ " x  $12\frac{1}{2}$ " strips of triangle stripe fabric to the top and bottom of the white star fabric rectangles.
2. Sew one strip of trees to the top and one to the bottom of the piece made at 1 above (if the tree strips are slightly shorter than the star and triangle stripe fabrics, trim those to the same length as the tree strips).
3. Sew 1" x  $12\frac{1}{2}$ " white spectrum strips to the top and bottom of the piece made at 2 above, again trimming if too long.
4. Finish as for the wall hanging although the pieces of backing fabric will not need to be joined. The place mats were quilted with vertical lines approximately  $\frac{1}{4}$ " apart using a white thread on the front and back.



1606/1 TREES



1605/1 ABSTRACT SQUARES



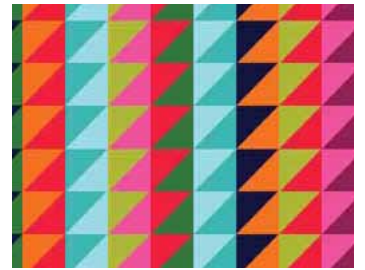
1607/W PRESENTS



1609/W STARS



1608/P OGEE



1611/1 TRIANGLE STRIPE



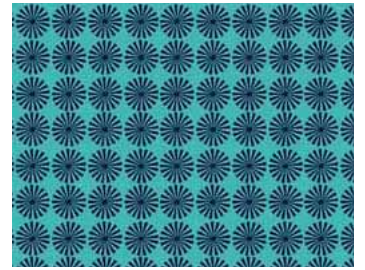
1607/B PRESENTS



1609/B STARS



1608/G OGEE



1610/T PINWHEEL



1610/P PINWHEEL



1610/G PINWHEEL



1613/1 PANEL



1612/1 ADVENT CALENDAR

ALL DESIGNS 50% OF ACTUAL SIZE

Wrap It Up Quilt by Lynne Goldsworthy  
Finished size 130 x 160cms (56" x 62")  
Instructions also include matching  
Table Runner and Placemats.

FREE pattern instructions available to download  
from [www.makoweruk.com](http://www.makoweruk.com) March 2016  
Also requires 2000 W01